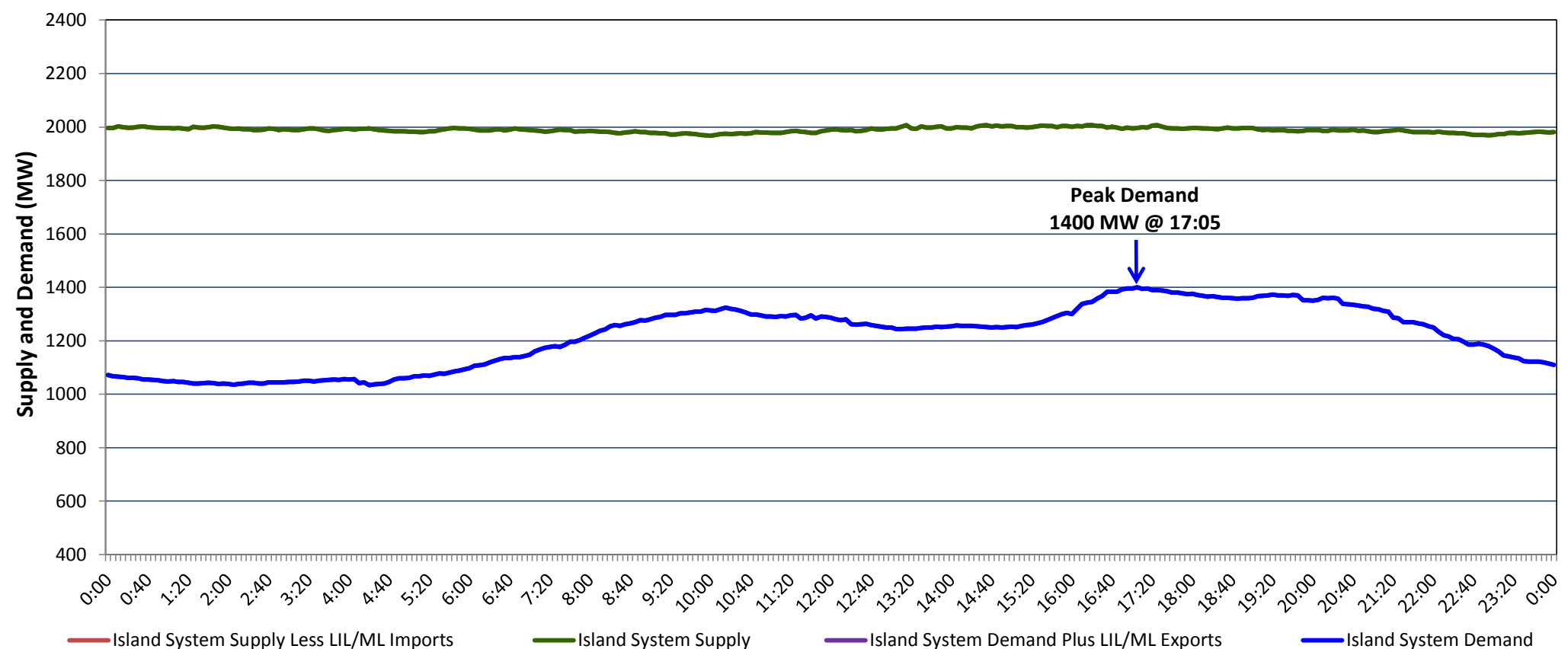


Newfoundland Labrador Hydro (NLH) Supply and Demand Status Report Filed Monday, December 09, 2019

Section 1 Island Interconnected System Supply, Demand & Exports Actual 24 Hour System Performance For Sunday, December 08, 2019



Supply Notes For December 08, 2019

1,2

- A As of 0932 hours, November 23, 2019, St. Anthony Diesel Plant available at 8.85 MW (9.7 MW).
B As of 1600 hours, November 28, 2019, Stephenville Gas Turbine available at 25 MW (50 MW).

Section 2 Island Interconnected Supply and Demand

Mon, Dec 09, 2019	Island System Outlook ³		Seven-Day Forecast	Temperature (°C)		Island System Daily Peak Demand (MW)	
				Morning	Evening	Forecast	Adjusted ⁷
Available Island System Supply: ⁵	2,000	MW	Monday, December 09, 2019	-3	2	1,410	1,306
NLH Island Generation: ⁴	1,665	MW	Tuesday, December 10, 2019	5	9	1,270	1,167
NLH Island Power Purchases: ⁶	130	MW	Wednesday, December 11, 2019	9	0	1,290	1,187
Other Island Generation:	205	MW	Thursday, December 12, 2019	-5	-5	1,410	1,306
ML/LIL Imports:	-	MW	Friday, December 13, 2019	-8	-7	1,540	1,434
Current St. John's Temperature & Windchill:	-2 °C	-9 °C	Saturday, December 14, 2019	-7	-2	1,400	1,296
7-Day Island Peak Demand Forecast:	1,540	MW	Sunday, December 15, 2019	1	12	1,250	1,148

Supply Notes For December 09, 2019

3

- Notes:
1. Generation outages for running and corrective maintenance are included. These are not unusual for power system operations. They generally do not impact customer supply. The power system operators schedule outages to system equipment whenever possible to coincide with periods when customer demands are low and sufficient supply reserves are available. However, from time to time equipment outages are necessary and reserves may be impacted.
 2. Due to the Island system having no synchronous connections to the larger North American grid, when there is a sudden loss of large generating units there may be a requirement for some customer's load to be interrupted for short periods to bring generation output equal to customer demand. This automatic action of power system protection, referred to as under frequency load shedding (UFLS), is necessary to ensure the integrity and reliability of system equipment. Under frequency events have typically occurred 5 to 8 times per year on the Island Interconnected System and the resultant customer load interruptions are generally less than 30 minutes. With the activation of the Maritime Link frequency controller during the winter of 2018, UFLS events have occurred less frequently.
 3. As of 0800 Hours.
 4. Gross output including station service at Holyrood (24.5 MW) and improved NLH hydraulic output due to water levels (35 MW).
 5. Gross output from all Island sources (including Note 4).
 6. NLH Island Power Purchases include: CBPP Co-Gen, Nalcor Exploits, Rattle Brook, Star Lake, Wind Generation and capacity assistance (when applicable).
 7. Adjusted for curtailable load, market activities and the impact of voltage reduction when applicable.

Section 3 Island Peak Demand Information Previous Day Actual Peak and Current Day Forecast Peak

Sun, Dec 08, 2019	Actual Island Peak Demand ⁸	17:05	1,400 MW
Mon, Dec 09, 2019	Forecast Island Peak Demand		1,410 MW

- Notes: 8. Island Demand / LIL / ML Exports (where applicable) is supplied by NLH generation and purchases, plus generation owned and operated by Newfoundland Power and Corner Brook Pulp & Paper (Deer Lake Power, DLP).